



Saiham Knit Composite Ltd.



Best Factory In - Health & Safety



QUALITY | COMMITMENT | GREAT VALUE

USGBC LEED-NEW Construction | FACTFILE



“Saiham Knit Composite” at Saiham Nagor, Noyapara, Madhabpur ,Habiganj-3333.Bangladesh has achieved LEED Certificate Reg. No.100030658 under New Construction Category of LEED USGBC USA. The Factory is a 44,971.38 sq.ft building incorporating optimization in measures such as water use reduction, energy saving through efficient light design, HVAC design, rainwater harvesting, STP (Sewerage Treatment Plant) hot water module to reduce gas usage and condense of steam to form water and use in production process.



LEED Facts

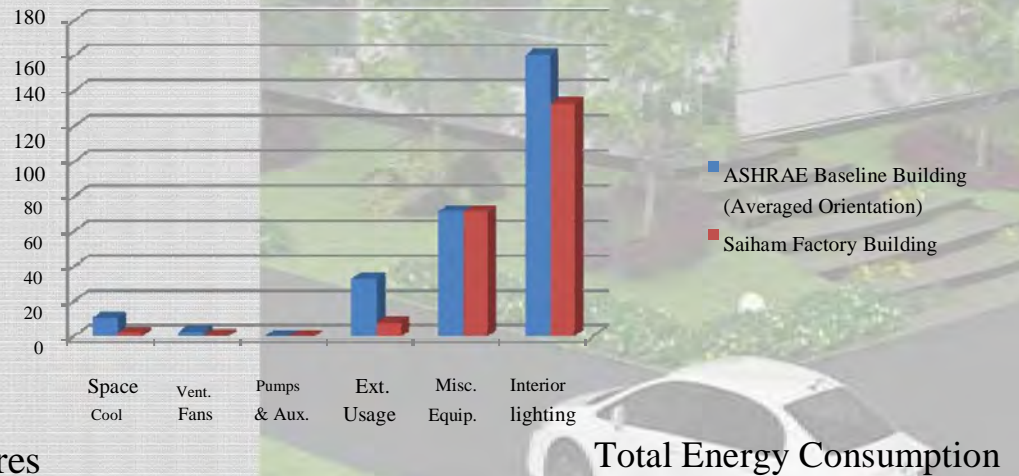
Saiham Knit Composite- Habiganj

LEED NC

Silver Rating

Saiham Knit Composite, Habiganj, Bangladesh

- 16.9% Energy savings | Interior Lighting
- 82.7% Energy savings | HVAC
- 82.1% Energy savings | Ventilation fans
- 76.4% Energy savings | Exterior lighting
- 100 % Water reduction | Non Domestic Usage
- 50% Water reduction | Use of Low Flow Fixtures
- 10% Use of recycled content material
- 10% Use of Regional Material



***Rain Water usage approx. 1.5 million litre/month depending on season *** 500 litres of steam saved from auto low down in boiler.

Code of Conduct:

SKCL firmly believe in applying the highest ethical standards for human rights, labour and environmental practices.

We understand that our manufacturing units should not stand apart from the country in which they operate and that their activities and conduct should be a source of positive influence.

As a supplier we recognize that, by treating our employees with respect and allowing them to operate in working conditions that are clean and safe with a fair days wage, will make a difference in increasing productivity, reducing risk and improving quality of product. In turn this will also lead to increased customer confidence.

Being socially compliant only delivers these benefits if done effectively so a monitoring program, with country law as a minimum standard, is in operation with improvement programs geared towards full compliance achievement.

In summary, here are some of the main elements of the Saiham Knit Composite Ltd. Code of Conduct:

Compliance with national laws and regulations

SKCL should observe all applicable national laws, rules and regulations in force. In areas not, or only weakly, regulated by national law, they shall strive to act according to the values and principles laid down in the Code.

Basic understanding of responsible corporate behavior

Through SKCL business activities, they should contribute to their community's well-being, promotion and development. This, through the promotion of the principles of responsible management, such as transparency, accountability, sincerity and integrity. No form of bribery or corruption practiced by management or workers shall be tolerated.

Respect for human rights

It is the responsibility of private enterprise to take all possible and economically feasible measures within their sphere of influence to assume their responsibility to respect human rights. In the case of infringements directly related to a company's business activities, SKCL should use their influence to encourage the responsible actors to mitigate risks or remedy rights violations in the supply chain.

Labour rights and working conditions

SKCL shall uphold the eight core labour standards of the International Labour Organization (ILO) and should commit to create a safe and humane working environment.

Effective remediation of child labour

SKCL should commit to work towards the effective remediation of child labour by agreeing upon a minimum acceptable working age of not less than 18 years. A worker's age must be determined before employment.

Protection of workers and skills development

SKCL workers should not carry out work in dangerous, unsafe or hazardous conditions or work which is harmful to their safety and health. They also may not work during night hours and shall avoid working with potentially harmful machines or substances, including (but not limited to) fabric cutting machines or toxic chemicals. In SKCL workplace training should be welcomed and encouraged.

No forced labour

SKCL do not tolerate any form of forced or compulsory labour. Workers shall have sought work on their own free will. All work or service which is demanded under the threat of penalty, violence or intimidation and for which they said person has not offered him or herself voluntarily shall be objected.

Freedom of association and right to collective bargaining

The workers' rights to establish and to join work organizations of their own choosing without previous authorization shall be respected and the right to collective bargaining shall be observed. SKCL shall adopt an open and collaborative attitude towards the activities of trade unions. The Representatives must be elected in a fair and neutral electoral procedure.

Humane treatment of workers

SKCL Management all levels treats their workers with respect and dignity and does not engage in abusive or inappropriate behavior towards workers. Disciplinary measures may not involve physical punishment or psychological harassment.

Wages and benefits

The wage level for regular working hours shall not fall below contractual or legal minimum wage rates in SKCL. Illegal and unjustified wage deductions, in particular for disciplinary measures, SKCL does not tolerate.

Working hours and overtime

The maximum number of regular weekly working hours for the garment industry shall not exceed 48 hours (8 hours per week-day), such as defined by national law. Overtime hours are allowed only with permission granted by the SKCL and General Labour their impact on the environment and the climate as low as possible. This may include the promotion of environmentally friendly and energy-efficient production and the implementation of a waste management system.

Subcontracting policy

Assuming their responsibility to influence a transparent supply chain, SKCL refrain from unauthorized subcontracting to third parties. Whenever subcontracting workloads, the companies appeal to these third parties to respect the values and requirements outlined in this Code of Conduct.

Disputes, grievances and complaints

Every worker in SKCL Factory has the opportunity to raise concerns and to complain about factory policies, practices or working conditions. A suggestion box has available within SKCL factory in order to receive anonymous comments.

DETAIL INFORMATION

- Our Motto : Quality, Commitment and Great Value.
- Our Vision : To set up a fully compliant and, longer term, a "Green" factory and to be a dependable strategic partner to our valued customers.

- Management :

S. M. Faisal	Chairman
Syed Shafqat Ahmed MBA	Managing Director
Engr. Syed Ishtiaq Ahmed	Director
S.F.A.M. Shahjahan	Director
Mrs.Rio Aziza Salim	Director

- Sister Cocern :
 - **Saiham Textile Mills Ltd.** : (29,760 spindles which can produce yarn 09 tons/day. Mainly produce TC & 100% Ring spun Polyester)

 - **Saiham Cotton Mills Ltd.** : (57,960 spindles which can produce yarn 33 tons/day. Mainly produce 100% Ring Cotton)

 - **Faisal Spinning Mills Ltd.** : (30,960 spindles which can produce yarn 17 tons/day. Mainly produce 100% Ring Cotton)

 - **Saiham Melange Spinning Unit** : CB 27,000 spindles which can produce yarn 15 tons/day.
- * Our Spinning Mills are approved by "H&M"

- Corporate Office : "Saiham Tower. House # 34, Road # 136, Gulshan-1 Dhaka-1212, Bangladesh
Hotline: (+88-096) 12997799
Fax: (88-02)9894607, 8826254
Website: www.saihamknit.com

- Factory : Saihamnagar, Union : Noyapara, Thana : Madhobpur, District : Habigonj, Bangladesh.

- Nature of Business: 100 % export oriented vertically integrated composite knitting factory. (yarn, knitting, dyeing/finishing, garments and printing/Embroidery)

- Compliance Accreditations:
SEDEX, WRAP (GOLD), OKEO-TEX (Class-1) Fabric & Garments, Organic.
Factory Accredited by: Marks & Spencer, Mothercare, MyerAsia, H&M, Disney, NEXT.

- Registration Certificates
 - BGEMA Reg. no : 5330
 - EPB reg. no : 5121
 - Vat reg. no : 7021049244 Date: 15-03-2009
 - Tin no : 035-201-7930 Date: 04-04-2009
 - Fire reg. no : SYL-2, 48/10/11 (Main Building)
(Printing)
 - Environment reg. no : পআ/সিবি/ছাড়পএ/২০২৬/২০০৯/১০৪৪ Date:07-07-2009
 - BKMEA Membership: 1671-A/2010

- Bank Asia Ltd.
Corporate Branch
Noor Tower (1st Floor)
110 Biruttam C.R. Datta Road
Dhaka-1205, Bangladesh.
Tel: (88 02) 9674501, 9674502
Fax: (88 02) 9677032
SWIFT: BALBBDDH002

- Midland Bank Ltd.
Head Office Anex
Zahid Plaza (9th Floor)
30, Gulshan Avenue
Dhaka-1212
PABX- 8809666410, 8809666999
SWIFT: MDBLBDDH355

- Dhaka Bank Ltd.
Foreign Exchange Branch
Biman Bhabon, 100, Motijheel C/A
Dhaka-1000
Tel: 88-02-9577946, 88-02-7111851
SWIFT: DHBLBDDH107

- Factory type : Private Limited Company.
- Capital : US\$ 1,455,88,235
(US\$ 145.60 Mil.)
- Turnover : US\$ 48 Mil. (Approx.)
- No. of R & D Staff : 21 to 25
- No. of Textile Engineers : 50 to 60
- Total employees : 4,000 People (approx.)

PRODUCTION AND PRODUCTS

■ Production Capacity

Basic Legging 900000 Pcs(approx.) Hoody/Jackets
300000 Pcs(approx.) Basic T-shirt/Tank Tops 1200000
Pcs(approx.) Jogger/Pants 380000 Pcs(approx.) Polo
200000 Pcs(approx. Total: 2980000 Pcs(approx.) Fabrics
Knitting Capacity: 15 Tons per day (Approx.)
Dyeing Capacity: 20 Tons Per day (Approx.)

■ No. of Sewing Lines: 64 (Sixty Four)

(57 of 25 sewing machines per line).
(07 of 35 sewing machines per line).

■ Competitive Advantage

: Reuse/Recycle of energy and Resources
: Vertical setup from yarn to garments
: Variety of yarn (In-house)
: Laboratory is Accredited by M&S & H&M
: In House Washing, Embroidery & Printing Facilities
: R & D Department
: Entire factory & setup is automated. Order is tracked
digitally from initiation to shipment.

■ Products:

Fabric:

- Lycra Single Lacoste Fabric
- Double Lacoste Fabric
- Lycra Double Lacoste Fabric
- Lycra Terry Fleece Fabric
- Heavy Jersey Fabric
- Jumbo Pique Fabric
- Jersey Fleece Fabric
- 2X2 Rib Fabric
- Flat Back Rib Fabric
- Interlock Fabric
- Mesh Fabric
- Point Rib
- Towell Terry
- Mesh
- Verigrad
- Pique Fabric
- Lycra Pique Fabric
- Terry Fleece Fabric
- Fleece Fabric
- Bubble Knit Fabric
- Birds Eye Fabric
- 1X1 Rib Fabric
- 2X2 Lycra Rib Fabric
- Waffle Fabric
- Laycra Interlock Fabric
- Engineering Strip
- Bonded Rib
- Bonded Jersey
- Flat Back Rib
- Duel Pant Rib
- Single Jersey Fabric
- Lycra Single Jersey Fabric
- Single Lacoste Fabric
- Lycra Fleece Fabric
- Haringbone Fabric
- Jersey Mass Fabric
- Lycra 1X1 Rib Fabric
- 5X2 Rib Fabric
- Jack Rib Fabric
- Drop Needle Interlock
- Viscose
- Automon Crepe
- Denim effect jersey
- All kind of Peach/Micro Peach

■ Our Main Buyer

- 01. Marks & Spencer (UK)
- 02. Mothercare (UK)
- 03. H&M (Sweden)
- 04. NEXT (UK)
- 05. US Polo (USA)
- 06. Terranova (Italy)
- 07. OKAIDI (France)

Garments:

Men's wear

T-Shirts & Polo's
Knit Jackets
Sweat tops & Hoodies
Jerseys
Knit fashion Tops
Loungewear tops
All type of knit Vest
All type of Joggers
All type of Knit Shorts
Loungewear bottoms
Active wear tops
Active wear bottoms
Active wear shorts

Ladies wear

T-Shirts & Polo's
Knit Jackets
Sweat tops & Hoodies
Jerseys
Tunics
All type of knit fashion tops
All type of knit Vest & tank tops
All type of knit Yoga tops
Loungewear tops
Leggings & Jeggings
All type of Joggers
All type of Knit Shorts
Loungewear bottoms
All type of knit Yoga bottoms
All type of knit skirts
Jumpsuits & playsuits
All type of Knit Dress
Beach wear
Active wear tops
Active wear bottoms
Active wear shorts

Kids wear

T-Shirts & Polo's
Knit Jackets
Sweat tops & Hoodies
Jerseys
All type of knit fashion tops
All type of knit Vest & tank tops
Knit Sleep wear tops
Leggings & Jeggings
All type of Joggers
All type of Knit Shorts
Knit Sleep wear bottoms
All type of knit skirts
Bodysuits & Sleepsuits
Jumpsuits & playsuits
All type of Knit Dress

ENVIRONMENTAL AND SOCIAL RESPONSIBILITIES

■ Social Compliance Statement:

SKCL firmly believe in applying the highest ethical standards for human rights, labour and environmental practices.

We understand that our manufacturing units should not stand apart from the country in which they operate and that their activities and conduct should be a source of positive influence.

As a supplier we recognize that, by treating our employees with respect and allowing them to operate in working conditions that are clean and safe with a fair days wage, will make a difference in increasing productivity, reducing risk and improving quality of product. In turn this will also lead to increased customer confidence.

Being socially compliant only delivers these benefits if done effectively so a monitoring program, with country law as a minimum standard, is in operation with improvement programs geared towards full compliance achievement.

■ More specifically - workforce rights:

- ✓ Employment shall be freely chosen and regular with no forced, bonded or involuntary labour. Deposits or identity papers will not be withheld.
- ✓ Freedom of association and collective bargaining will be supported without discrimination, with parallel means adopted if local law restricts such behavior.
- ✓ Employees will be treated with respect and their health, safety and basic human rights will be protected and promoted. All activities and premises will comply with SKCL health and safety policy, which forms an integral part of this overall policy.
- ✓ We shall not employ anyone under the age of 18 years
- ✓ We will fulfill all our legal obligations in terms of employment, payment and benefit practices whilst ensuring a living wage is paid. Conditions will be documented before employment commences.
- ✓ Working hours will reflect those of the sectors in the country we operate and shall not be more than 48 hours per week on a regular basis nor include more than 12 hours voluntary overtime weekly.
- ✓ There will be equal opportunity in all aspects of employment with no discrimination on the basis of race, caste, national origin, religion, age, disability, gender, marital status, sexual orientation, union membership or political affiliation.

■ Environmental Commitment:

A USGBC Certified Green Plant (Silver). **Registration No: 1000030658**

Hot water module (Saves gas consumption by approx 20%-25%)

Biological ETP

Re-use of water & Steam. Reuses 40,000 Litres of water/steam

Harvest rainwater (1,50,000 Litres)

Reduce carbon emission by 10%

STP (Sewerage treatment Plant) - Reused waste water for landscaping & flushing of toilets.

PRODUCTION AND MACHINE

Machineries for Wet Lab

No.	Machine Type	Brand Name	Origin	Quantity
1	Lab Conditioning M/C (Tem-20°C±2°C and HR-65%±2%)			01 P's
2	Crock master (Digital M/C—Model-830)	Jeams-Heal co.	UK	01 P's
3	Tensile tester m/c—TITAN-5	Jeams-Heal co.	UK	02 P's
4	Bursting strength tester- TRUBRUST-4 M/C	Jeams-Heal co.	UK	01 P's
5	Pilling drum M/C Orbitor-2	Jeams-Heal co.	UK	01 P's
6	Pilling drum m/c-ICI Pilling tester	SDL Atlas	UK	01 P's
7	Incubator	Jeams-Heal co.	UK	02 P's
8	PH Meter- Mettler-Toledo	Jeams-Heal co.	UK	01 P's
9	Light Fastness-Xenotest-150S+	SDL Atlas	Germany	01 P's
10	Martindale Abrasion of Pilling tester	Jeams-Heal co.	UK	01 P's
11	Wascator-FOM-71CLS Washing m/c -	Jeams-Heal co.	UK	02 P's
12	Indesit washing m/c	Italy SPL	Italy	01 P's
13	Electrolux Trumble Dryer m/c	Jeams-Heal co.	UK	02 P's
14	Dynawash Garments wash m/c	Jeams-Heal co.	UK	01 P's
15	Rotawash m/c	SDL Atlas	UK	01 P's
16	Quick wash Plus washing m/c	SDL Atlas	UK	01 P's
17	Spectra Photometer (color Matching & Quality Control)	Data Color Co.	USA	01 P's
18	Ahiba IR (Infrared Lab Dyeing m/c)	SDL Atlas	UK	01 P's
19	High Temperature Lab Dyeing m/c	Fongs	China	02 P's
20	Light Box (Color Matching Cabinet)	SDL Atlas	UK	01 P's
21	Persperometer- m/c	Jeams-Heal co.	UK	02 P's
22	Shrinkage template & scale	SDL Atlas	UK	01 P's
23	Weight Balance (4 digit)	SDL Atlas	UK	02 P's
24	Shaker m/c (Magnetic Staring)		China	02 P's
25	Digital Pipette	SDL Atlas	UK	01 P's
26	Pantone Book (size-2x2 inch-TCX, TPX, C & U)	Pandora	USA	01 P's
27	Pantone Book-Bross-vol-38	Bross	China	03 P's
27	Pantone Book/Neon Color -TN	Pandora	USA	01 P's

Machineries for Dyeing

No.	Dyeing	Capacity	Brand	Type	Origin	Quantity
1	Sample Dyeing Machine	10 kgs	Fongs	Jet	China	01 P's
2	Sample Dyeing Machine	30 kgs	Fongs	Jet	China	02 P's
3	Sample Dyeing Machine	60 kgs	Fongs	Jet	China	01 P's
4	Sample Dyeing Machine	30 kgs	Fongs	HT	China	01 P's
5	Sample Dyeing Machine	30 kgs	Canler	HT	Turkey	05 P's
6	Atmospheric Dyeing Machine	2000 kgs	Fongs	Chamber	China	02 P's
7	Atmospheric	200 kgs	Fongs	Chamber	China	01 P's
8	Atmospheric	400 kgs	Fongs	Chamber	China	01 P's
9	Atmospheric	600 kgs	Fongs	Chamber	China	01 P's
10	Atmospheric	800 kgs	Fongs	Chamber	China	03 P's
11	Atmospheric	800 kgs	Canlar	Chamber	Turkey	01 P's
12	Atmospheric	1000 kgs	Canlar	Chamber	Turkey	03 P's
13	Atmospheric	1200 kgs	Fongs	Chamber	China	01 P's
14	High Temperature	200 kgs	Fongs	Chamber	China	01 P's
15	High Temperature	400 kgs	Fongs	Chamber	China	01 P's
16	High Temperature	600 kgs	Fongs	Chamber	China	01 P's

SECTION WISE MACHINERIES

Machineries for Finishing

No.	Machine Type	Brand Name	Origin	Quantity	Capacity
1	Dewatering, Slitting Machine	Bruckner & Bianco	Germany & Italy	02 P's	24,000 KGs
2	Stenter (8 chamber) gas heated	Bruckner	Germany	02 P's	20,000 KGs
3	Compactor with pin chain (6.0m)	Bruckner & Bianco	Germany & Italy	02 P's	20,000 KGs
4	Fabric Inspection Machine	UZU, Bianco	Thailand & Italy	06 P's	12,000 Yds
5	Dryer Machine (Drycom 2 ch X 2p X 2600) Equilizing relax Machine	Canler	Turkey	01 P's	06 Tons

Machineries for Knitting Section

Single Jersey Machine

No.	DIA	Gauge	Feeder	Brand	Origin	No. of M/C
1	30 inch	24/28	90	Pai Lung	Taiwan	06 P's
2	32 inch	24/28	96	Pai Lung	Taiwan	04 P's
3	34 inch	24/28	102	Pai Lung	Taiwan	11 P's
4	36 inch	24/28	108	Pai Lung	Taiwan	08 P's
5	40 inch	24/28	120	Pai Lung	Taiwan	03 P's

RIB/Interlock Machine

No.	DIA	Gauge	Feeder	Brand	Origin	No. of M/C
1	34 inch	18/24	72	Pai Lung	Taiwan	01 P's
2	36 inch	18/24	72	Pai Lung	Taiwan	02 P's
3	40 inch	18/24	80	Pai Lung	Taiwan	01 P's
4	32 inch	18/24	64	Pai Lung	Taiwan	01 P's
5	42 inch	18/24	84	Pai Lung	Taiwan	02 P's
6	44 inch	12/18/24	70/80	Pai Lung	Taiwan	02 P's

Flat Knitting Machine

No.	DIA	Gauge	Feeder	Brand	Origin	No. of M/C
1	80 inch	14	12	Pai Lung	Taiwan	08 P's
2	30 inch	20	90	Pai Lung	Taiwan	01 P's
3	32 inch	20	96	Pai Lung	Taiwan	01 P's

Four Track Three End Fleece Circuler Knitting Machine

No.	Spec.	Gauge	Feeder	Brand	Origin	No. of M/C
1	30	20	90	Pai Lung	Taiwan	01 P's
2	32	20	96	Pai Lung	Taiwan	02 P's
3	34	20	120	Pai Lung	Taiwan	01 P's

Four Track Single Jersey Open width Knitting Machine

No.	Spec.	Gauge	Feeder	Brand	Origin	No. of M/C
1	32	24	96	Pai Lung	Taiwan	04 P's
2	34	24	102	Pai Lung	Taiwan	06 P's
3	36	24	108	Pai Lung	Taiwan	06 P's
4	38	24	114	Pai Lung	Taiwan	03 P's
5	40	20/24	120	Pai Lung	Taiwan	03 P's
6	42	20/24	126	Pai Lung	Taiwan	01 P's

Utility and ETP

	Description	Brand & Model	Origin	No. of Unit
	Generator (Gas fired)	Jenbacher	Austria	03 Set
	Boiler (Gas fired)	Cochran	Scotland	02 Set
	Compressor	Kaisier	Germany	10 Set
	Cable and Busbar	BBI	Italy	04 Set
	DB Board, Switch board and control panel	Sunlight	Germany	04 Set
	Deep Tubewell	Local	Bangladeshi	03 Set
	Water Treatment Plant (75 m ³ /hr)	Local	Bangladeshi	02 Set
	ETP (Biological = 110 m ³ /hr)	Joseph Egli	Italy	02 Set
	ETP (Biological = 460 m ³ /hr)	Joseph Egli	Italy	02 Set

Embroidery

No.	Description	Brand Name	Origin	No. of M/C
1	Embroidery Flat M/C	Tajima	Japan	01 Set
2	Embroidery Flat M/C	Tajima	Japan	03 Set
3	Heat Seal M/C			02 P's
4	Embroidery Soft Tajima DG Plus	Tajima	Japan	01 Set

Printing Machine

No.	Description	Brand Name	Origin	No. of M/C
1	Over M/C 12 Color	M&R VictorOne	USA	01 P's
2	Octopus 8 Color			01 P's
3	Label Print M/C			03 P's
4	Conveyor Carriour			02 P's
5	Heat Press M/C			02 P's
6	Print Table	Local Made (74)		04 P's

■ Cad Section

No.	Description	Brand Name	Origin	Quantity
1	Cad Pattern Design Software	Gerber & Lectra	USA, France	01 P's
2	Marker Design Software	Gerber	USA	01 P's
3	Digitizer	Gerber & Lectra	USA, France	01 P's
4	Plotter	Gerber	USA	01 P's

■ Cutting Section

No.	Description	Brand Name	Origin	Quantity
1	Automatic Spreading System	Gerber & Lectra	USA, France	04 P's
2	Spreading table	Gerber	USA	06 P's
3	Auto Cutter	Lectra	France	02 P's
4	Manual cutter, Model KS-AU-V 8	KM	Japan	05 P's
5	Manual cutter, Model KS-AU-V 10	KM	Japan	09 P's
6	Manual Rib cutter, PL-LU-922	Dino	Taiwan	03 P's
7	Fusing Machine, HP-450MS	Hashima	Japan	01 P's
8	Thread Re-winding Machine, HW-20C	Hashima	Japan	01 P's
9	Fabric Inspection Machine	uzu	Thailand	01 P's
10	Rib Cutting	Toyo		01 P's
11	End Cutter	East Man	Thailand	04 P's
12	Fabric Relaxing Machine	East Man	China	01 P's
12	Band Knit Machine	East Man	Thailand	02 P's
12	Rib Cutter	Toyo	--	01 P's

■ Finishing Section

No.	Description	Brand Name	Origin	Quantity
1	Steam Iron set, NH6162	Nisho	China	134 Set
2	Vacuum Iron Table, NH 1290	Nisho	China	134 Set
3	Thread Sucking Machine, NH-TS-5600	Nisho	China	11 Set
4	Needle Detector, NH-770G	Hashima	Japan	04 Set

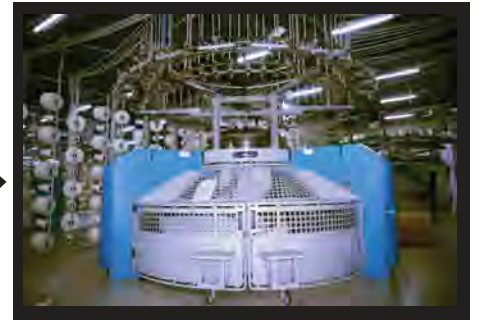
PHOTO GALLERY



Greige Fabric-Yarn Store



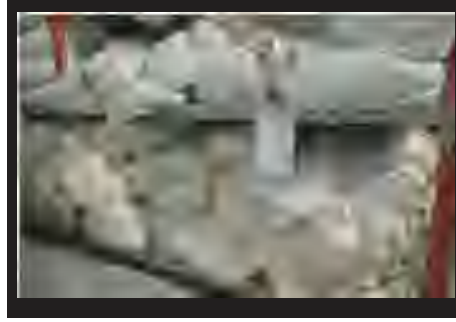
Knitting-Section (Flat Knit Machine)



Knitting section (Circular Machine)



Dyeing Section



Batching



Greige Fabric inspection (4 point system)



Dyeing Section



Dyeing Section (Calner)



Stenter



Finished fabric (store room)



Finished Fabric Inspection



Finishing Section (Brash-Suidish)



Cutting Section



Auto Cutter Machine



Cutting Section



Dyes Store (AC controlled)



Chemical Store



Fong deying



Printing Section



Printing Machine



Embroidery-Tajima

Above pictures are copyrighted under Registration No.12737-COPR. Any unauthorized usage of the pictures without written consent of management of SKCL is subject to prosecution

PHOTO GALLERY



Sewing Department Auto cutter/suction, Dry head sewing machines



Sewing Department Auto cutter/suction, Dry head sewing machines



In line Inspection



Shipment Inspection



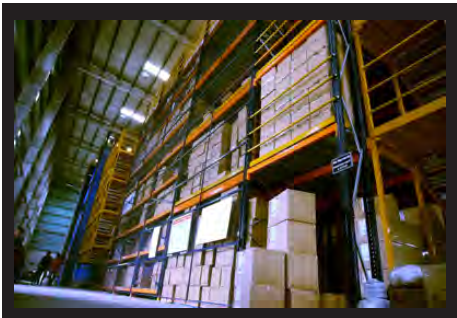
Iron Section



Finished Garments Inspection



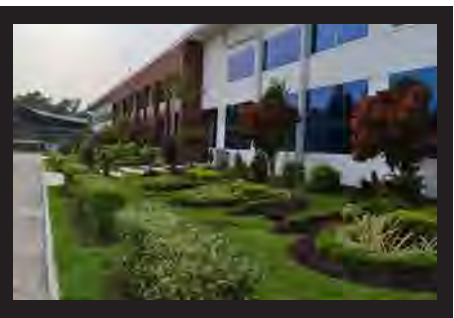
Metal Detector Machine



Warehouse



Finished Goods Store



Green Building: Front Side Garden



Green Floor: Sewing Line indoor Garden



Green Floor: Sewing Line auto cutter/suction



ETS-Sewing Line User Terminal



ETS: Sewing Line User Terminal



ETS: User Terminal in Finishing Table



Dynamic Automated production Follow up system

SUPPORT FACILITIES



Accessories Room



R&D



Sample Room



WTP



ETP-Plant



ETP-Plant



Training Room



State of art Laboratory



Special Floor



Boiler



Generator control panel



Canteen



Helipad



Time attendance & access control



CCTV Servillance



Fire control panel



Fire Alarm Switch



PA System



Fire Door

CONTACT US

Saiham Knit Composite Ltd.

Corporate office address

Saiham Tower.
House # 34, Floor# 12, Road # 136,
Gulshan-1, Dhaka-1212, Bangladesh.
Hotline: (+88-096) 12997799
Fax: (88-02)9894607, 8826254

Factory address

Saihamnagar, Union: Noyapara, Thana: Madhabpur, District: Habigonj, Bangladesh
Website URL/address

<http://www.saihamknit.com>

Contact Person

Syed Shafqat Ahmed
Managing Director
Email: md@saihamknit.com

Sahantanu Paul
Asst.General Manager (Knitting)
Cell: (88) 01709 319 020
Email: shantanu_fab@saihamknit.com

Anil Barua
General Manager (Sales)
Cell: (88) 01709 319 013
Email: anil_sales@saihamknit.com

Fazley Rabbi Shakil
Senior Manager (Sales)
Cell: (88) 01709 319 014
Email: shakil_sales@saihamknit.com

Follow us with Google Map

(Head Office to Factory)

N.B: Copy this link and paste to Browser as below

http://maps.google.com/maps?saddr=gulshan+1road+136,+Dhaka.+bangladesh&daddr=hobiganj,+bangladesh&hl=en&ll=24.084082,90.909119&spn=1.386599,1.766052&sll=24.086589,90.925598&sspn=1.386572,1.766052&geocode=FbbUagEdv6pjBSkV8sSRm8dVNzENfE-B7ez05w%3BFQn-cwEd_tZyBSmTCTIYVERRNzEiOyjWTRWwSg&vpsrc=0&mra=ls&t=m&z=9

(Shahjalal International Airport to Factory)

N.B: Copy this link and paste to Browser as below

<http://maps.google.com/maps/ms?hl=en&vpsrc=0&ctz=-360&ie=UTF8&msa=0&msid=212403635500797139695.0004aeda52afc8dbe7040&ll=24.185007,91.350181&spn=0.008632,0.02105&t=h&z=16&iwloc=0004aeda85052402aff56&lci=com.panoramio.all>